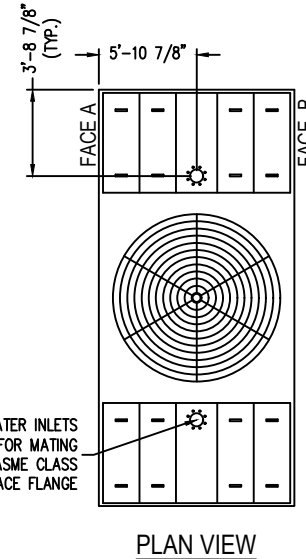


**Notes**

- 1) Drawings are not to scale. All dimensions are in feet and inches. Weights are in pounds and include options and accessories.
- 2) Unless otherwise indicated, connections 3" and smaller are MPT. Connections 4" and larger are grooved to suit a mechanical coupling and beveled for welding.
- 3) Field piping should be fabricated at time of installation. Pre-fabrication of pipe work is not recommended.
- 4) Do not support piping from unit connections. All necessary piping supports to be supplied by others.
- 5) For weight loadings and support requirements, refer to the suggested unit support drawing.
- 6) The area above the fan discharge must be unobstructed.
- 7) Due to height limitations on truck shipments, some items shown may ship loose for field installation.
- 8) Outlet connections are sized for pump suction application at the design flow rate. They are based on the maximum flow rate through the strainer with basin water at standard operating level.



STEEL LOUVERS  
STEEL CASING PANELS

MODEL NO.	SHIPPING WEIGHT	OPERATING WEIGHT	HEAVIEST SECTION WEIGHT
S5E-1222-14L	21940	40490	12090
S5E-1222-14M	21940	40490	12090
S5E-1222-14N	22080	40630	12230
S5E-1222-14O	22130	40680	12280
S5E-1222-14P	22270	40820	12420
S5E-1222-14Q	22330	40880	12480
S5E-1222-14R	22490	41040	12640
S5E-1222-14S	22490	41040	12640

ORDER NO:

DATE:



**BALTIMORE AIRCOIL COMPANY**

**5000E Unit Print  
Two Piece Units**

DRAWING NUMBER:  
**UP-1222-14**