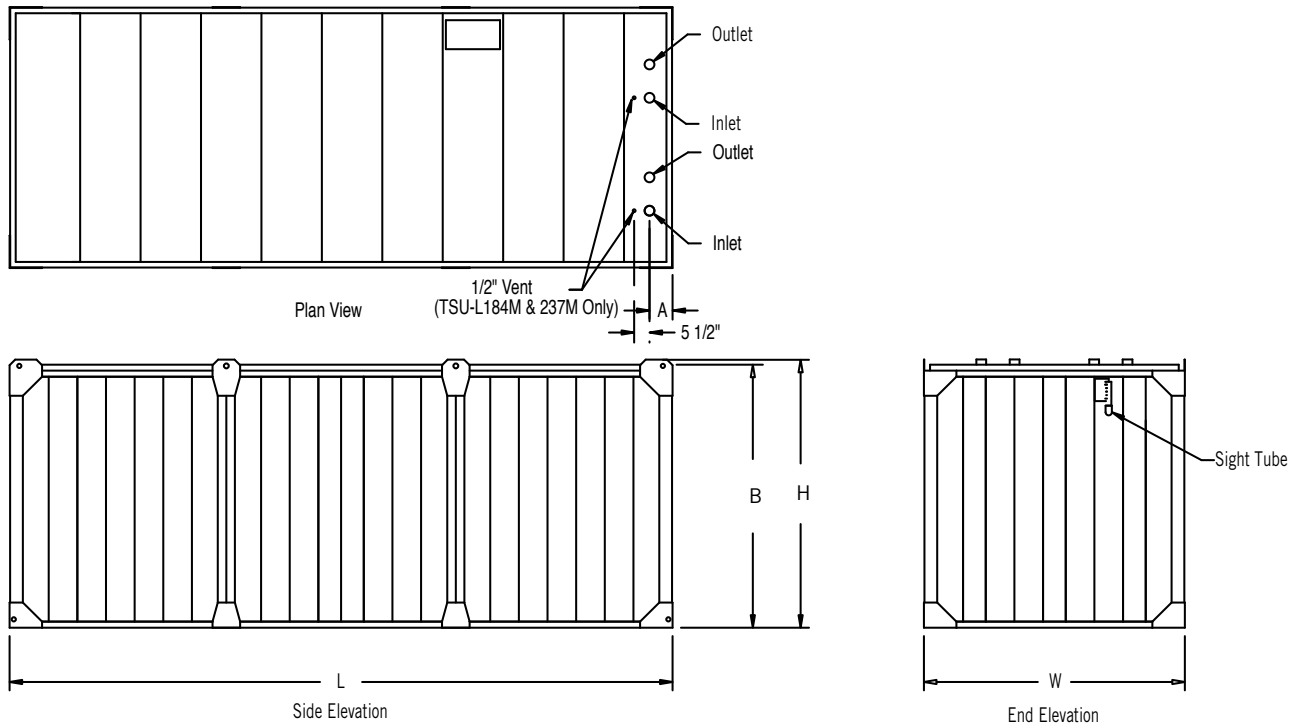


TSU-M Engineering Data



Model Number	Weights (lbs)		Volumes (gal)		Dimensions					Connection Size
	Operating	Shipping	Tank (Water)	Coil (Glycol)	L	W	H	A	B	
TSU-237M	39,100	9,750	2,990	260	10'-7 5/8"	7'-10 3/8"	8'-0"	8 5/8"	7'-10"	2"
TSU-476M	73,900	16,750	5,840	495	19'-10 1/4"	7'-10 3/8"	8'-0"	9 3/4"	7'-10"	3"
TSU-594M	93,100	20,200	7,460	610	19'-10 1/4"	9'-9 1/4"	8'-0"	9 3/4"	7'-10"	3"
TSU-761M	113,800	24,000	9,150	790	19'-10 1/4"	11'-9 3/4"	8'-0"	9 3/4"	7'-10"	3"
TSU-L184M	31,700	8,300	2,330	205	10'-7 5/8"	7'-10 3/8"	6'-6 3/4"	8 5/8"	6'-4 3/4"	2"
TSU-L370M	59,700	14,100	4,560	385	19'-10 1/4"	7'-10 3/8"	6'-6 3/4"	9 3/4"	6'-4 3/4"	3"
TSU-L462M	75,000	17,000	5,820	477	19'-10 1/4"	9'-9 1/4"	6'-6 3/4"	9 3/4"	6'-4 3/4"	3"
TSU-L592M	91,650	20,300	7,140	602	19'-10 1/4"	11'-9 3/4"	6'-6 3/4"	9 3/4"	6'-4 3/4"	3"

NOTES:

1. Unit should be continuously supported on a flat level surface.
2. All connections are grooved for mechanical coupling.

Do not use for construction. Refer to factory certified dimensions. This catalog includes data current at the time of publication, which should be reconfirmed at the time of purchase. Up-to-date engineering data, free product selection software, and more can be found at BaltimoreAircoil.com.