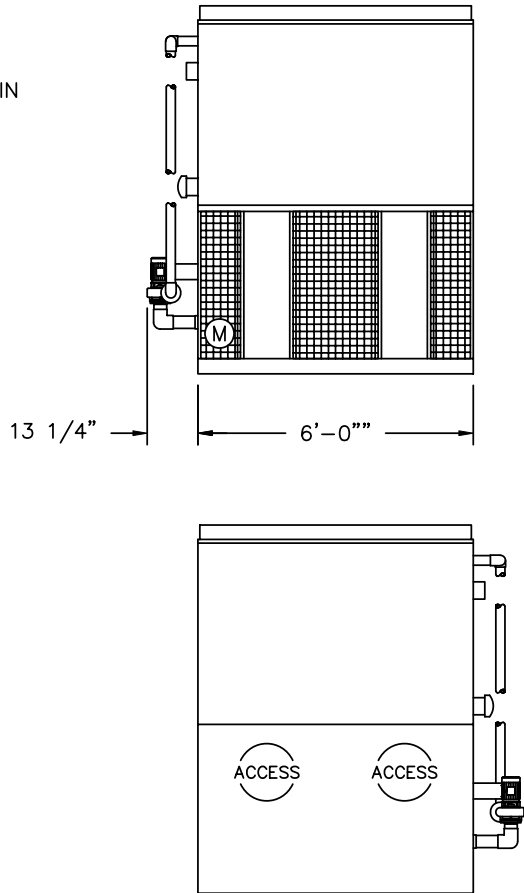
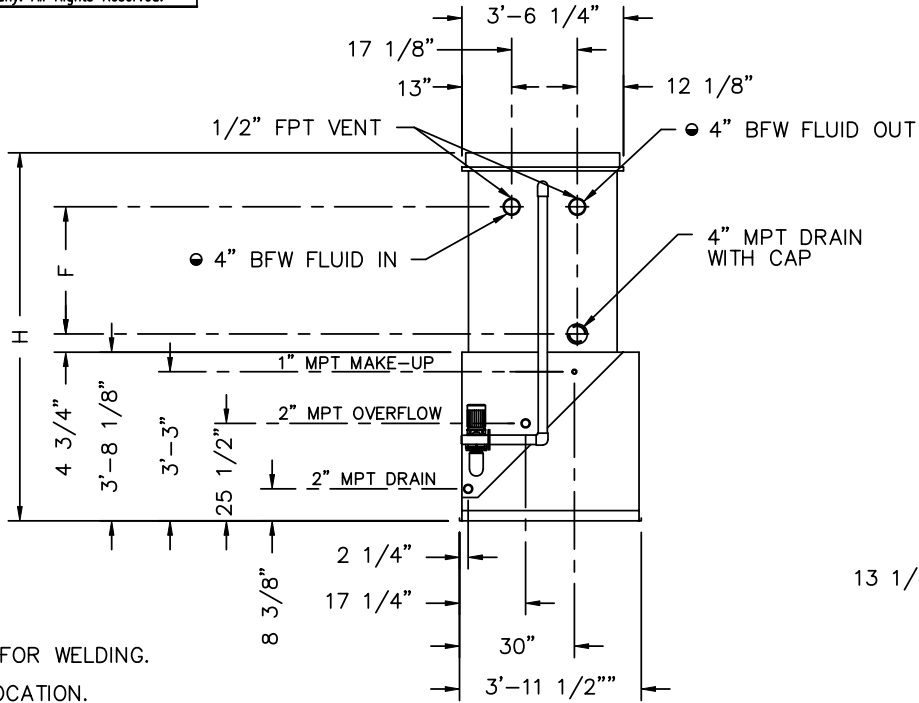


2000© Baltimore Aircoil Company. All Rights Reserved.



- BFW BEVELED FOR WELDING.
- Ⓜ FAN MOTOR LOCATION.
- ▲ UNIT NORMALLY SHIPS IN ONE PIECE.

MODEL NO.	APPROX. SHIPPING WEIGHT	APPROX. OPERATING WEIGHT	HEAVIEST SECTION (COIL)	F	H
VF1-018-02	2175	2635	2175 ▲	13 1/4"	6'-7 1/4"
VF1-018-12	2415	2955	2415 ▲	21 3/4"	7'-3 3/4"
VF1-018-22	2640	3260	1720	30 1/4"	8'-0 1/4"
VF1-018-32	2940	3660	2010	38 3/4"	8'-8 3/4"
VF1-018-42	3190	4010	2260	47 1/4"	9'-5 1/4"

- NOTES:
- ALL DIMENSIONS ARE IN FEET AND INCHES. WEIGHTS ARE IN POUNDS.
  - UNLESS OTHERWISE INDICATED, ALL CONNECTIONS 6 INCHES AND SMALLER ARE MPT AND CONNECTIONS 8 INCHES AND LARGER ARE BEVELED FOR WELDING.
  - DIMENSIONS SHOWING LOCATION OF COIL CONNECTIONS ARE APPROXIMATE AND SHOULD NOT BE USED FOR PREFABRICATION OF CONNECTING PIPING.
  - FOR SUPPORT REQUIREMENTS, REFER TO THE SUGGESTED STEEL SUPPORT DRAWING.

B.A.C.  
ORDER NO:  
DATE:



RIGHT HAND UNIT  
END OUTLET WITH PUMP  
DRAWING NUMBER:  
BAC-11544A