



NEW Series 5000

INDUSTRIAL MODULAR COOLING TOWER

Highest Reliability, Easiest Maintenance

The Series 5000 Industrial Grade Modular Cooling Tower provides superior performance with BAC's patent pending ENDURAFLOW™ Heat Transfer System for dirty water applications. The Series 5000 also offers the most corrosion resistant materials package with EVERTOUGH™ Construction, combined with the most reliable drive option in the ENDURADRIIVE™ Fan System.

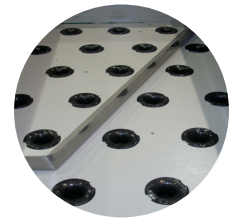


ENDURADRIIVE™ Fan System

The only variable speed direct drive solution for modular cooling towers, the ENDURADRIIVE™ Fan System reduces maintenance by 90% while maintaining 100% reliability on transmission components

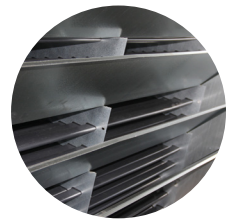
Gravity Fiberglass Reinforced Polyester Hot Water Basins

Provide increased reliability and lifespan combined with easy accessibility and servicability of spray water system



External Louvers

Require near zero maintenance and allow for easy visual inspection of the ENDURAFLOW™ Heat Transfer System



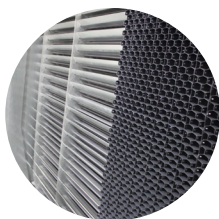
TriArmor® Corrosion Protection System

Increases reliability, while extending the life of the unit



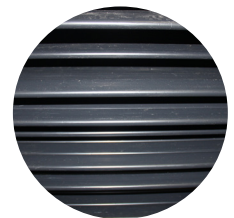
Internal Drift Eliminators

Designed to be service-friendly for easy removal, reducing maintenance and service time



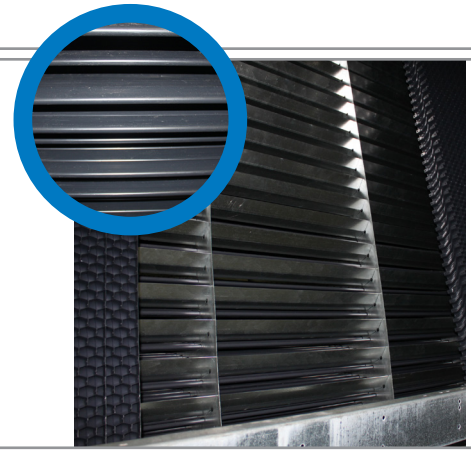
ENDURAFLOW™ Heat Transfer System

Superior low clog performance for dirty water applications, reduces fill replacement and downtime



ENDURAFLOW™ Heat Transfer System (patent pending)

- ✓ Patent pending technology maximizes thermal performance in demanding power and process applications
- ✓ Patent pending design allows for cleaning while tower is in operation
- ✓ Straight through visibility reduces maintenance time and helps ensure thermal performance



Heavy Duty Materials of Construction

- ✓ **EVERTOUGH™ Construction:**
 - TriArmor® Corrosion Protection System Basin
 - Thermosetting Hybrid Polymer Structure
 - Fiberglass Reinforced Polyester Hot Water Basins
- ✓ **A Custom Mix of Component Materials:**
 - Thermosetting Hybrid Polymer Coated Construction
 - G-235 Galvanized Steel Construction
 - Stainless Steel Construction

EVERTOUGH™
C O N S T R U C T I O N

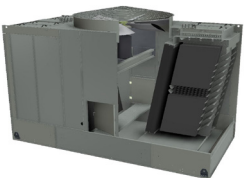
Designed and tested for the most adverse conditions, EVERTOUGH™ Construction includes the most corrosion-resistant option on every component.

ENDURADIVE™ Fan System

- ✓ The only variable speed direct drive solution for modular cooling towers.
- ✓ 90% less maintenance compared to a gear drive system
- ✓ Highest reliability with no transmission components
- ✓ Lifetime savings of over \$20,000 in maintenance and repair costs
- ✓ Industry Best Warranty: 7 year motor and 5 year VFD



NEW Series 5000 INDUSTRIAL MODULAR COOLING TOWER



THE PREFERRED MODULAR SOLUTION FOR:

- ✓ Replacement of existing field erected units with a true basinless design for existing concrete sumps
- ✓ Replacement for counterflow designs with the improved access and service features of crossflow
- ✓ Easily replaces field erected towers in a fraction of the time



**BALTIMORE
AIRCOIL COMPANY**

7600 Dorsey Run Road, Jessup, MD 20794 › Telephone: (410) 799-6200 › Fax: (410) 799-6416

PRD350/1-B

© 2016 Baltimore Aircoil Company

