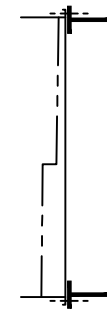
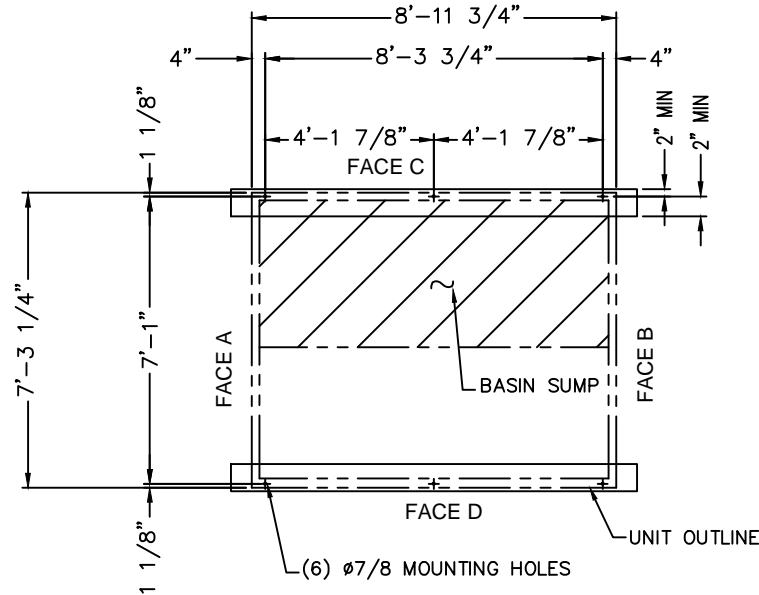


PLAN VIEW



ELEVATION VIEW

Model Number	Approx, Shipping Weight	Approx, Operating Weight
PFI-0709N-2DXDS-X1	6820	10150
PFI-0709N-3DXDS-X1	7940	11720
PFI-0709N-3DXES-X1	8490	12300
PFI-0709N-4DXDS-X1	9000	13170
PFI-0709N-4DXES-X1	9230	13300
PFI-0709N-5DXDS-X1	10080	14630
PFI-0709N-5DXES-X1	10340	14750
PFI-0709N-6DXES-X1	10860	15440

Notes

- 1) Drawings are not to scale. All dimensions are in feet and inches, weights are in pounds. Refer to submittal drawings for actual dimensions and weights.
- 2) Operating weight and weight loading are for units with water level in basin at overflow.
- 3) Unit support beams and anchor bolts to be designed and furnished by others.
- 4) Support beams must be flush and level at top.
- 5) All supporting steelwork must be designed in accordance with accepted structural practice. Maximum deflection of steelwork under unit to be 1/360 of span, not to exceed 1/2".
- 6) Each beam should be designed, as a minimum, for 65% of the total unit operation weight applied as a uniformly distributed load.

ORDER NO:

DATE:



**BALTIMORE AIRCOIL COMPANY**

**PFI Closed Circuit Cooling Tower  
Tabulated Steel Support - Plan A**

DRAWING NUMBER:  
**SS-PFI-0709**