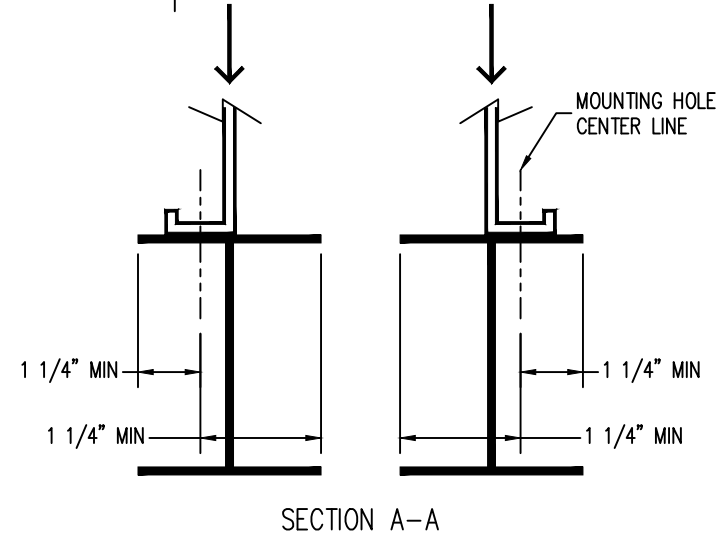


Notes

- 1) Drawings are not to scale.
- 2) All dimensions are in feet and inches. Weights are in pounds and include options and accessories.
- 3) Operating weight and weight loading are for units with water level in cold water basin at overflow.
- 4) Unit support beams and anchor bolts to be designed and furnished by others. Minimum dimensions shown in Section A-A are provided only to ensure proper support of unit.
- 5) Support beams must be flush and level at top.
- 6) Support beams are not limited to an I-beam shape.
- 7) Each beam should be designed, as a minimum, for 65% of the total unit operating weight applied as a uniformly distributed load.
- 8) If vibration isolators are used, they should be installed under the support beams and should never have direct contact with the unit.



MODEL NO.	APPROX. SHIPPING WEIGHT	APPROX. OPERATING WEIGHT
VRC-0374B-1218N-HA	19830	26860
VRC-0413B-1218N-JA	20010	27050
VRC-0442B-1218N-KA	20090	27120
VRC-0414B-1218N-HA	21480	28680
VRC-0456B-1218N-JA	21670	28870
VRC-0489B-1218N-KA	21740	28940
VRC-0533B-1218N-KA	24460	31830
VRC-0587B-1218N-LA	24940	32310
VRC-0630B-1218N-MA	25130	32500
VRC-0636B-1218N-LA	26400	33900
VRC-0680B-1218N-MA	26580	34090
VRC-0717B-1218N-NA	26700	34210

ORDER NO:

DATE:



BALTIMORE AIRCOIL COMPANY

Vertex™ Evaporative Condenser Single Cell Unit Support

DRAWING NUMBER: