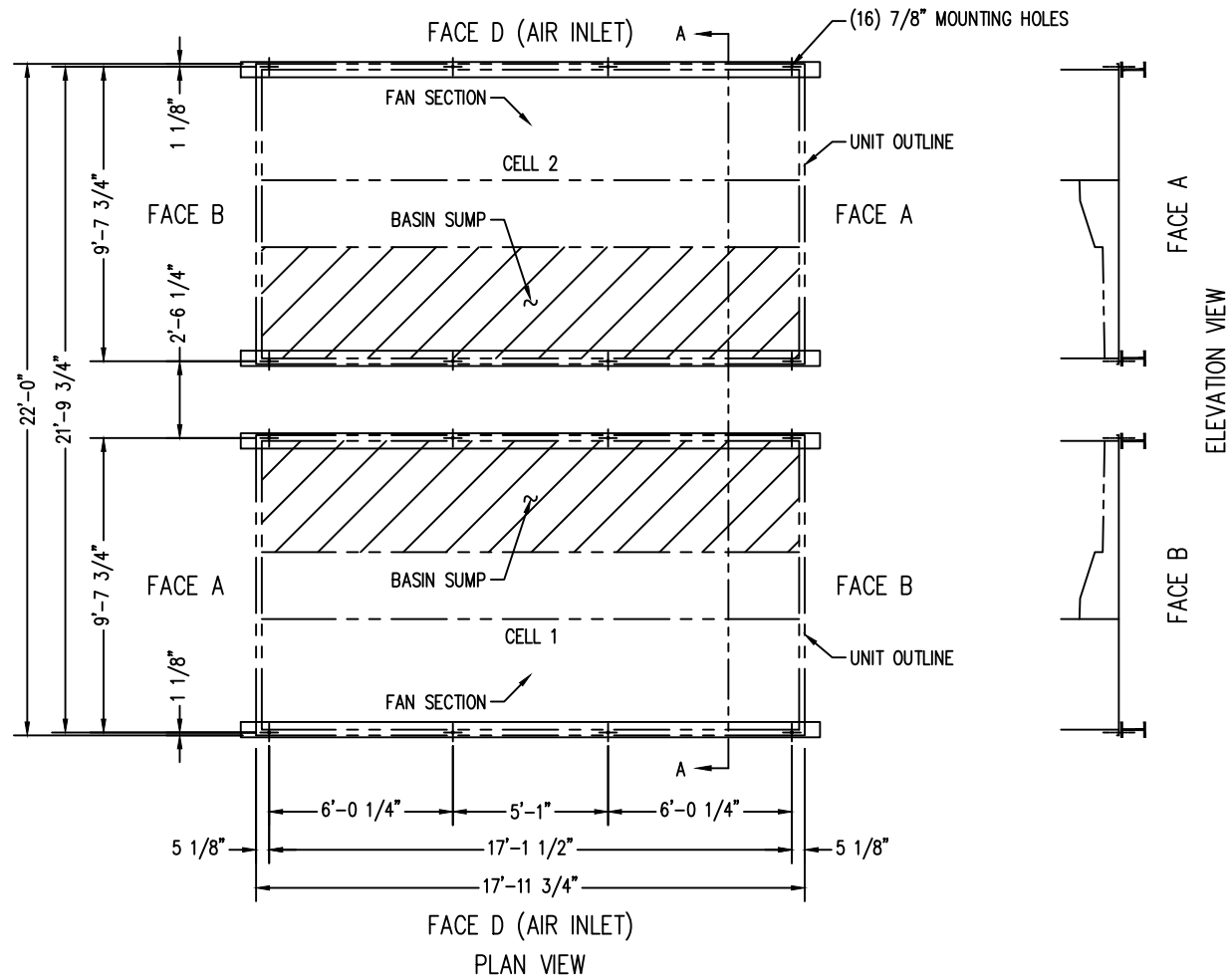
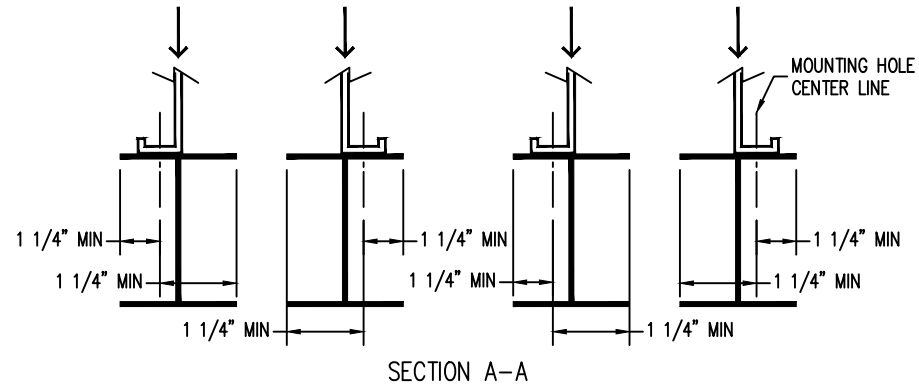


Notes

- 1) Drawings are not to scale.
- 2) All dimensions are in feet and inches. Weights are in pounds and include options and accessories.
- 3) Operating weight and weight loading are for units with water level in cold water basin at overflow.
- 4) Unit support beams and anchor bolts to be designed and furnished by others. Minimum dimensions shown in Section A-A are provided only to ensure proper support of unit.
- 5) Support beams must be flush and level at top.
- 6) Support beams are not limited to an I-beam shape.
- 7) Each beam should be designed, as a minimum, for 65% of the total unit operating weight applied as a uniformly distributed load.
- 8) If vibration isolators are used, they should be installed under the support beams and should never have direct contact with the unit.



MODEL NO.	APPROX. SHIPPING WEIGHT	APPROX. OPERATING WEIGHT
VRC-0653B-2018N-HA	34850	47570
VRC-0771B-2018N-KA	35370	48090
VRC-0724B-2018N-HA	37540	50520
VRC-0796B-2018N-JA	37910	50900
VRC-0853B-2018N-KA	38060	51040
VRC-0865B-2018N-JA	42600	55860
VRC-0927B-2018N-KA	42750	56000
VRC-1004B-2018N-KA	45050	58530
VRC-1106B-2018N-LA	46020	59500



ORDER NO: \_\_\_\_\_

DATE: \_\_\_\_\_



**Vertex™ Evaporative Condenser  
20x18 Two Cell Unit Support**

DRAWING NUMBER: \_\_\_\_\_