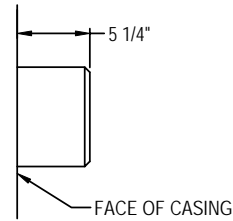


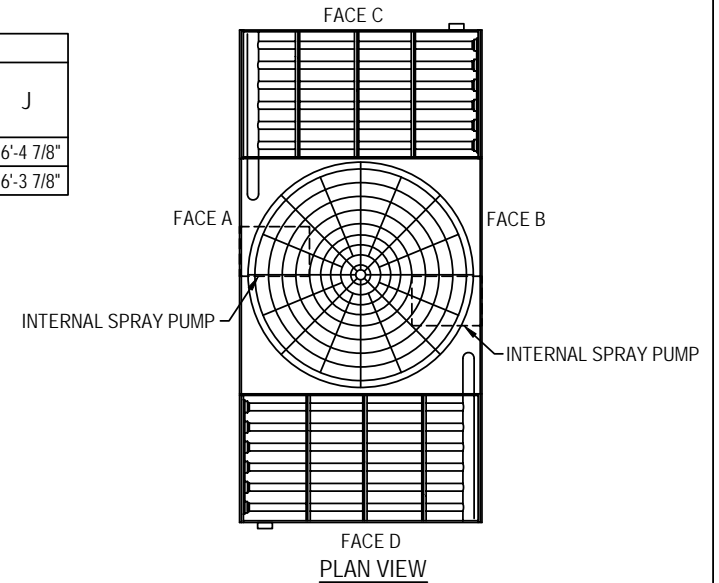
2003© Baltimore Aircoil Company. All Rights Reserved.

Model Number	Operating Weight	SHIPPING WEIGHT			
		Total	Lower Section	Plenum Section	Coil Section (See Note 7)
FXV-288-1QM	49690	30440	7790	3790	9430
FXV-288-1QN	49720	30470	7790	3820	9430
FXV-288-1QO	49770	30520	7790	3870	9430
FXV-288-1QP	49930	30680	7790	4030	9430
FXV-288-1QQ	49940	30690	7790	4040	9430
FXV-288-1QR	50160	30910	7790	4260	9430

TABLE A				
Connection Size	Maximum GPM (Per Cell)	F	G	J
6"	1800	4'-1 7/8"	1'-1 1/4"	16'-4 7/8"
8"	3200	3'-11 7/8"	1'-2 3/4"	16'-3 7/8"

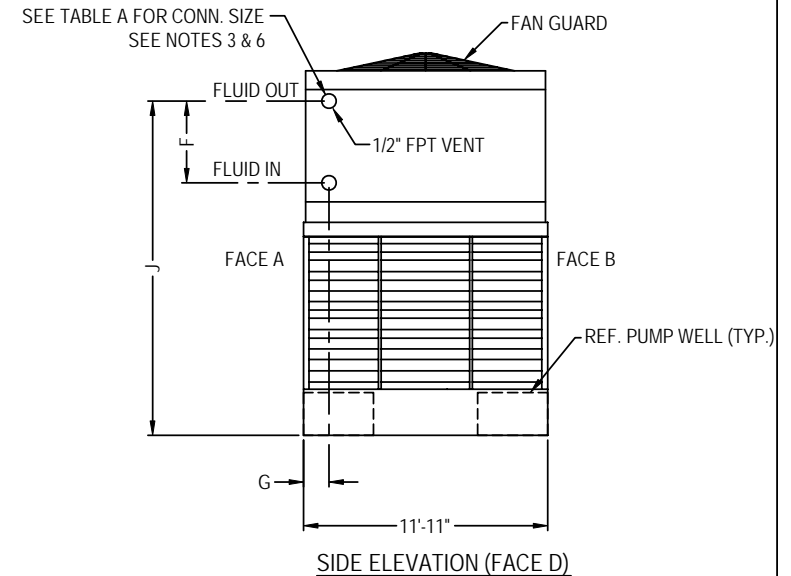
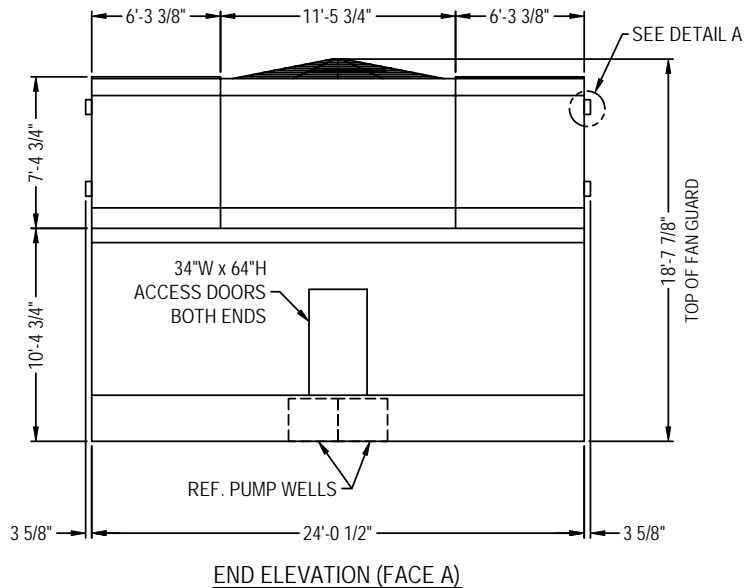


DETAIL A
(TYPICAL COIL CONNECTION)



NOTES:

1. All dimensions are in feet and inches. Weights are in pounds.
2. Dimensions showing location of coil connections are approximate and should not be used for prefabrication of connecting piping.
3. As standard, coil connections are beveled for welding.
4. The area above the discharge of the fan must be unobstructed.
5. For weight loading and support requirements refer to the suggested steel support drawing.
6. Do not support piping from unit.
7. Unit includes two coil sections. Weight shown for one coil section.



ORDER NO:

DATE: 07/24/03



Baltimore Aircoil

Series FXV Unit Print
Single Side Connection Quad

DRAWING NUMBER:
BAC-2A0RA0C170

A