

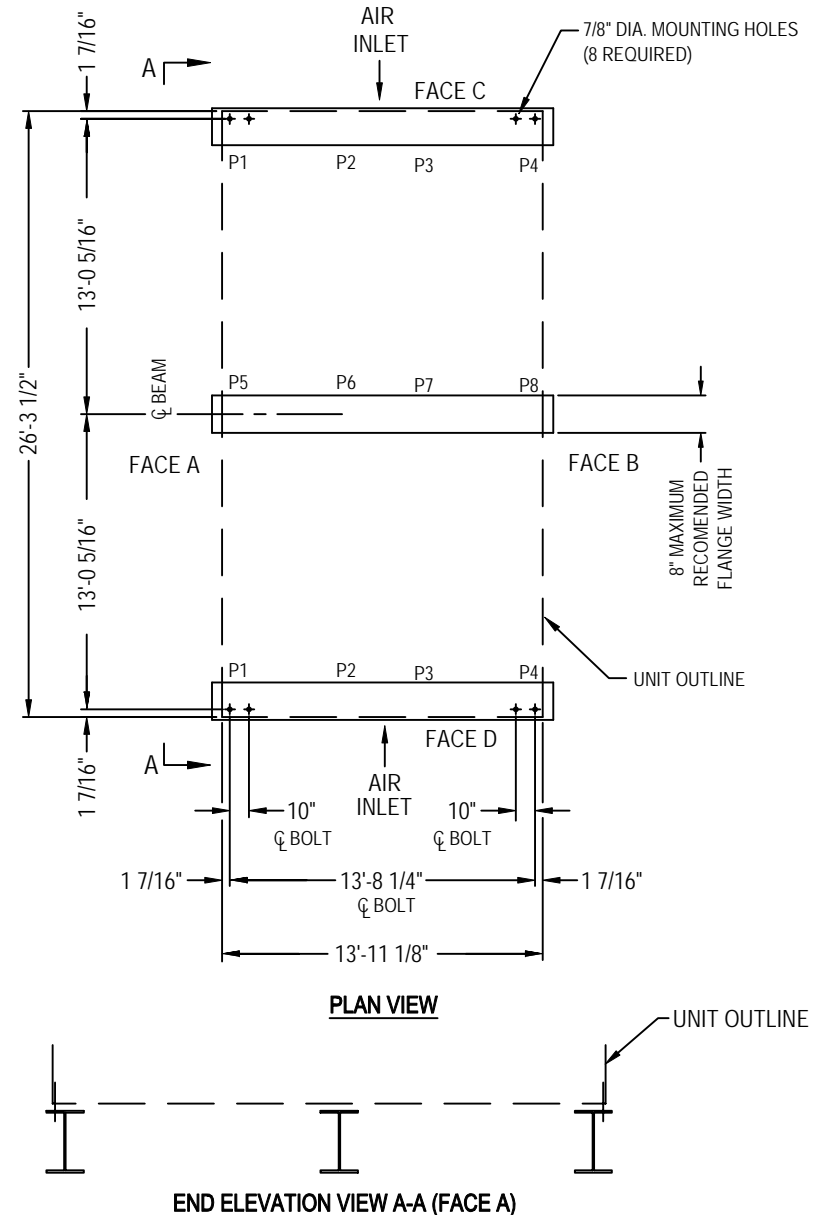
2003© Baltimore Aircoil Company. All Rights Reserved.

Model Number	Shipping Weight	Operating Weight	Weight Loading (lbs)							
			P1	P2	P3	P4	P5	P6	P7	P8
FXV-364-31N	31630	53900	8128	1380	1380	8128	6781	1153	1153	6781
FXV-364-31O	31680	53950	8136	1381	1381	8136	6787	1155	1155	6787
FXV-364-31P	31840	54110	8160	1385	1385	8160	6807	1158	1158	6807
FXV-364-31Q	31850	54120	8161	1385	1385	8161	6808	1158	1158	6808
FXV-364-31R	32070	54340	8194	1391	1391	8194	6836	1163	1163	6836
FXV-364-31S	32170	54440	8210	1394	1394	8210	6849	1165	1165	6849
FXV-364-41N	34910	58260	8786	1491	1491	8786	7329	1247	1247	7329
FXV-364-1QN										
FXV-364-41O	34960	58310	8793	1493	1493	8793	7335	1248	1248	7335
FXV-364-1QO										
FXV-364-41P	35120	58470	8817	1497	1497	8817	7356	1251	1251	7356
FXV-364-1QP										
FXV-364-41Q	35130	58480	8819	1497	1497	8819	7357	1251	1251	7357
FXV-364-1QQ										
FXV-364-41R	35350	58700	8852	1503	1503	8852	7384	1256	1256	7384
FXV-364-1QR										
FXV-364-41S	35450	58800	8867	1505	1505	8867	7397	1258	1258	7397
FXV-364-1QS										

NOTES:

1. Operating weight and weight loading are for units with water level in basin at overflow.
2. Supporting steelwork and anchor bolts to be designed and furnished by others.
3. All supporting steel must be level at top.
4. Beams should be selected in accordance with accepted structural practice. Minimum bearing width shall be 6". Maximum deflection of beam under unit to be 1/360 of span, not to exceed 1/2 inch.
5. Weights shown are for standard unit. Some accessories may add weight. See respective accessory submittal drawing for weight adds.

[ANCHORAGE PER ZONE 2B PER UBC 97/30 PSF]



ORDER NO:

DATE:



Baltimore Aircoil

Series FXV
Steel Support - Plan A Zone 2B

DRAWING NUMBER:
BAC-2B0AB00100

A