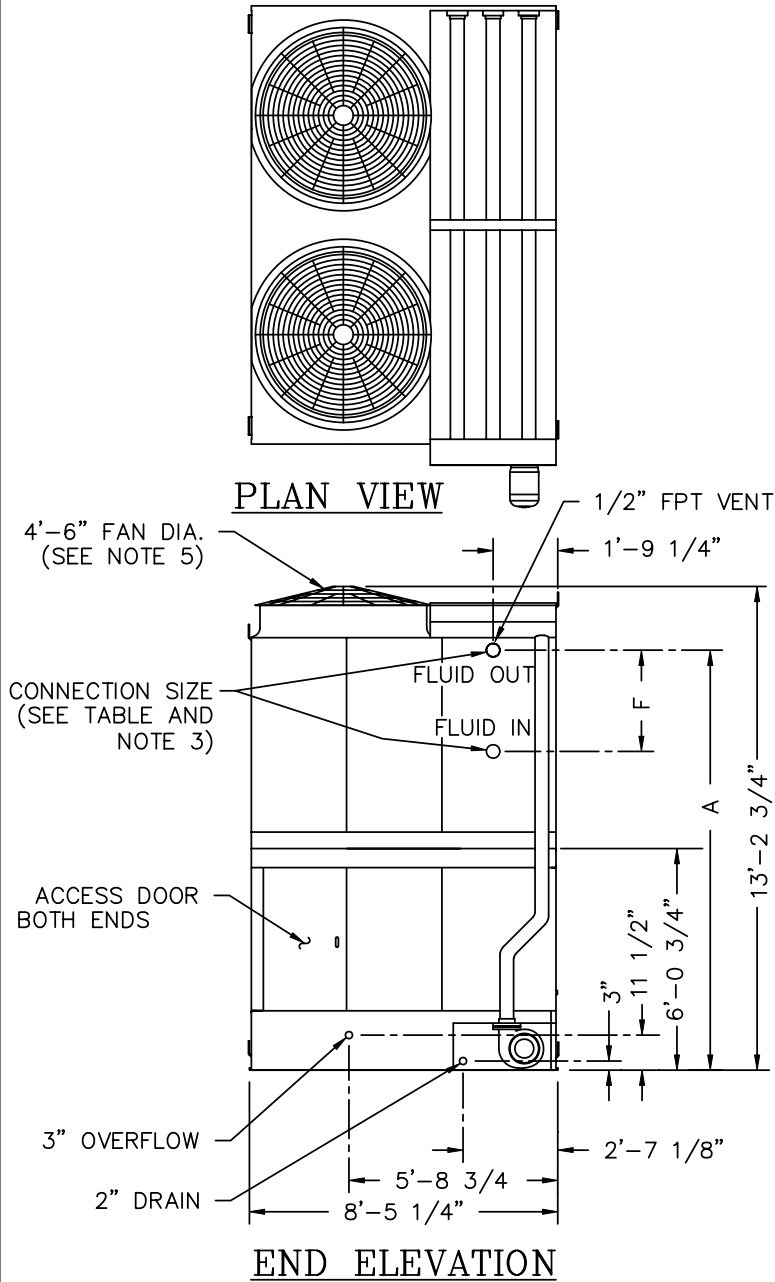


MODEL NUMBER	SHIPPING WEIGHT	OPERATING WEIGHT	HEAVIEST SECTION (UPPER)	CONNECTION SIZE	A	F
FXV- 441	8760	14,220	5120	4"	11'-6"	24"
FXV- 442	9410	15,150	5770	4"	11'-6"	33 1/4"
FXV- 443	10,060	16,080	6420	4"	11'-6"	42 1/2"
FXV- 444	10,770	17,070	7130	4"	11'-6"	51 3/4"
FXV- Q440	9410	15,150	5770	6"	11'-5"	31 3/8"
FXV- Q441	10,770	17,070	7130	6"	11'-5"	49 7/8"

NOTES:

1. ALL DIMENSIONS ARE IN FEET AND INCHES. WEIGHTS ARE IN POUNDS.
2. DIMENSIONS SHOWING LOCATION OF COIL CONNECTIONS ARE APPROXIMATE AND SHOULD NOT BE USED FOR PREFABRICATION OF CONNECTING PIPING.
3. COIL CONNECTIONS ARE IPS BEVELLED FOR WELDING.
4. CONNECTIONS 3" & SMALLER ARE MPT.
5. THE AREA ABOVE THE DISCHARGE OF THE FAN MUST BE UNOBSTRUCTED.
6. FOR WEIGHT LOADING AND SUPPORT REQUIREMENTS REFER TO THE SUGGESTED STEEL SUPPORT DRAWING.



(RH UNIT)

B.A.C.
ORDER NO:

DATE:



BALTIMORE AIRCOIL
COMPANY

SERIES 1500
FLUID COOLER

DRAWING NUMBER:
BAC-17092A

A