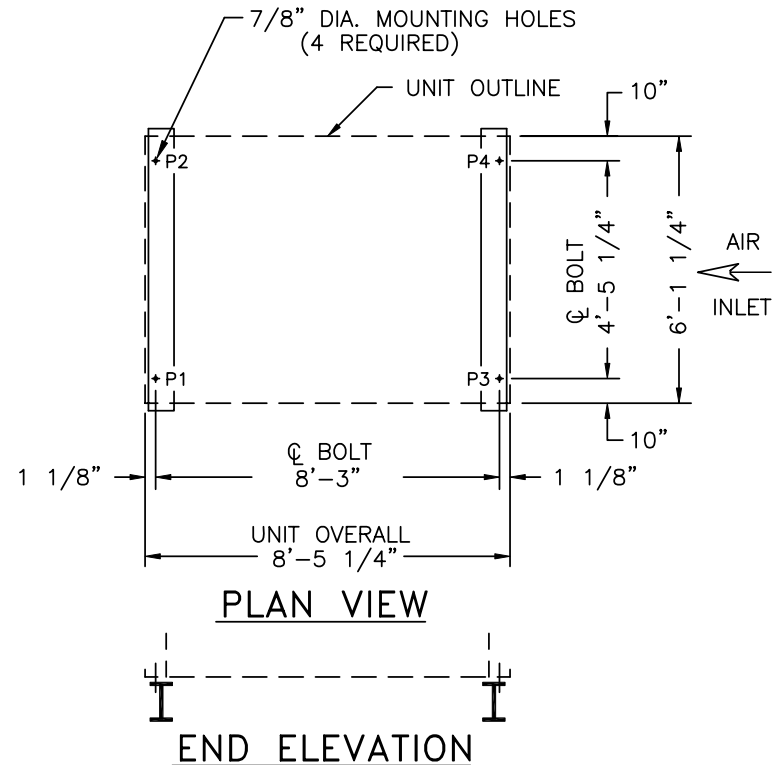


MODEL NUMBER	SHIPPING WEIGHT	WEIGHT LOADING (LBS.)				
		OPER. WEIGHT	P1	P2	P3	P4
FXV- 421	5050	7730	1440	1440	2425	2425
FXV- 422	5370	8190	1507	1507	2588	2588
FXV- 423	5710	8680	1578	1578	2762	2762
FXV- 424	6050	9160	1649	1649	2931	2931

NOTES:

1. SUPPORTING STEELWORK AND ANCHOR BOLTS TO BE DESIGNED AND FURNISHED BY OTHERS.
2. ALL SUPPORTING STEEL MUST BE LEVEL AT TOP.
3. BEAMS SHOULD BE SELECTED IN ACCORDANCE WITH ACCEPTED STRUCTURAL PRACTICE, MAXIMUM DEFLECTION OF BEAM UNDER UNIT TO BE 1/360 OF SPAN, NOT TO EXCEED 1/2 INCH.
4. ALTERNATELY THE UNIT MAY BE SUPPORTED ON COLUMNS AT THE FOUR CORNERS OF THE UNIT. CONSULT YOUR BAC REPRESENTATIVE FOR DETAILS.
5. IF VIBRATION ISOLATION RAILS ARE USED BETWEEN UNIT AND SUPPORTING STEEL, BE CERTAIN TO ALLOW FOR THE LENGTH OF THE VIBRATION RAILS WHEN DETERMINING LENGTH OF SUPPORTING STEEL. VIBRATION RAIL LENGTH AND MOUNTING HOLE LOCATIONS MAY DIFFER FROM THOSE OF THE UNIT. REFER TO VIBRATION ISOLATOR DRAWINGS FOR THIS DATA.
6. DO NOT USE THIS DRAWING TO SIZE POINT VIBRATION ISOLATORS. SEE YOUR BAC REPRESENTATIVE FOR DETAILS.



B.A.C. ORDER NO:

DATE:



BALTIMORE AIRCOIL COMPANY

SERIES 1500, FLUID COOLER
STANDARD STEEL SUPPORT

DRAWING NUMBER:
BAC-17150A