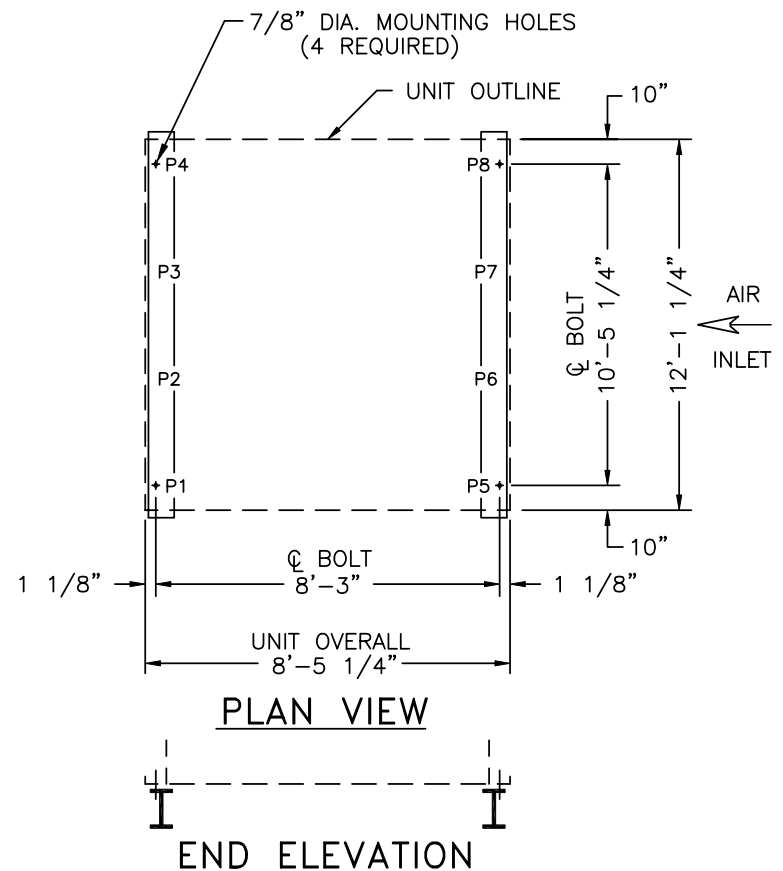


MODEL NUMBER	SHIPPING WEIGHT	WEIGHT LOADING (LBS.)								
		OPER. WEIGHT	P1	P2	P3	P4	P5	P6	P7	P8
FXV- 441	8760	14,220	1593	972	972	1593	4029	516	516	4029
FXV- 442	9410	15,150	1725	974	974	1725	4360	516	516	4360
FXV- 443	10,060	16,080	1858	974	974	1858	4692	516	516	4692
FXV- 444	10,770	17,070	1998	983	983	1998	5038	516	516	5038
FXV- Q440	9410	15,150	1725	974	974	1725	4360	516	516	4360
FXV- Q441	10,770	17,070	1998	983	983	1998	5038	516	516	5038

NOTES:

1. SUPPORTING STEELWORK AND ANCHOR BOLTS TO BE DESIGNED AND FURNISHED BY OTHERS.
2. ALL SUPPORTING STEEL MUST BE LEVEL AT TOP.
3. BEAMS SHOULD BE SELECTED IN ACCORDANCE WITH ACCEPTED STRUCTURAL PRACTICE, MAXIMUM DEFLECTION OF BEAM UNDER UNIT TO BE 1/360 OF SPAN, NOT TO EXCEED 1/2 INCH.
4. ALTERNATELY THE UNIT MAY BE SUPPORTED ON COLUMNS AT THE FOUR CORNERS OF THE UNIT. CONSULT YOUR BAC REPRESENTATIVE FOR DETAILS.
5. IF VIBRATION ISOLATION RAILS ARE USED BETWEEN UNIT AND SUPPORTING STEEL, BE CERTAIN TO ALLOW FOR THE LENGTH OF THE VIBRATION RAILS WHEN DETERMINING LENGTH OF SUPPORTING STEEL. VIBRATION RAIL LENGTH AND MOUNTING HOLE LOCATIONS MAY DIFFER FROM THOSE OF THE UNIT. REFER TO VIBRATION ISOLATOR DRAWINGS FOR THIS DATA.
6. DO NOT USE THIS DRAWING TO SIZE POINT VIBRATION ISOLATORS. SEE YOUR BAC REPRESENTATIVE FOR DETAILS.



B.A.C.
ORDER NO:
DATE:



BALTIMORE AIRCOIL
COMPANY

SERIES 1500, FLUID COOLER
STANDARD STEEL SUPPORT
DRAWING NUMBER:
BAC-17152A
A