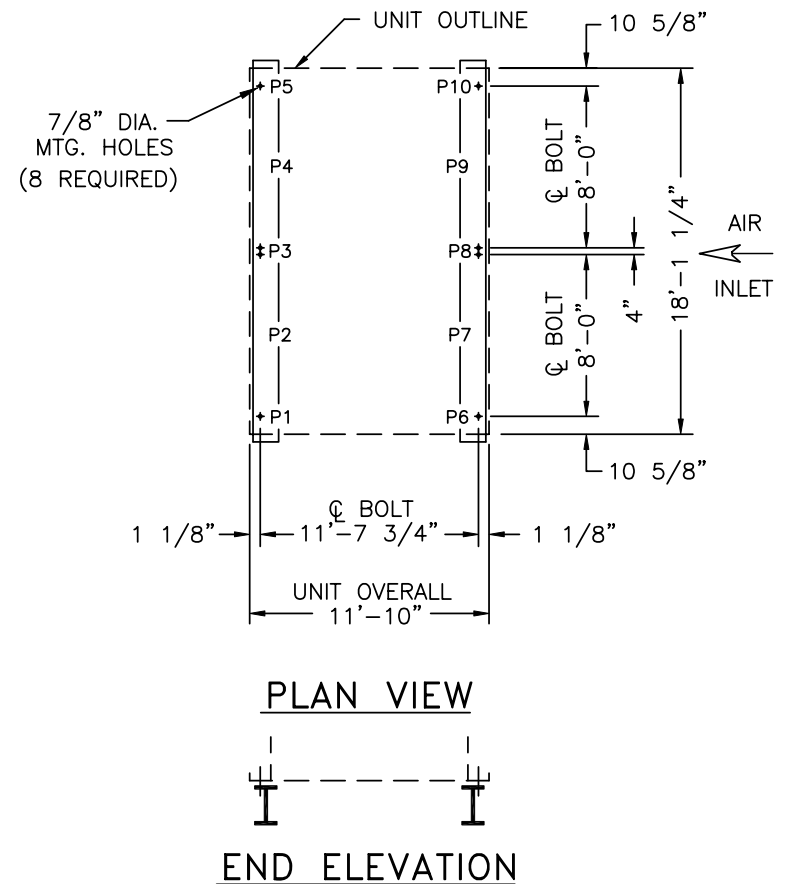


MODEL NUMBER	SHIPPING WEIGHT	WEIGHT LOADING (LBS.)										
		OPER. WEIGHT	P1	P2	P3	P4	P5	P6	P7	P8	P9	P10
FXV- 661	15,510	27,070	2611	1486	2246	1486	2611	6553	479	2566	479	6553
FXV- 662	17,070	29,290	2927	1489	2248	1489	2927	7343	479	2566	479	7343
FXV- 663	18,670	31,570	3251	1493	2252	1493	3251	8153	479	2566	479	8153
FXV- 664	20,280	33,810	3569	1498	2258	1498	3569	8947	479	2566	479	8947
FXV- Q660	17,070	29,290	2927	1489	2248	1489	2927	7343	479	2566	479	7343
FXV- Q661	20,280	33,810	3569	1498	2258	1498	3569	8947	479	2566	479	8947

NOTES:

1. SUPPORTING STEELWORK AND ANCHOR BOLTS TO BE DESIGNED AND FURNISHED BY OTHERS.
2. ALL SUPPORTING STEEL MUST BE LEVEL AT TOP.
3. BEAMS SHOULD BE SELECTED IN ACCORDANCE WITH ACCEPTED STRUCTURAL PRACTICE, MAXIMUM DEFLECTION OF BEAM UNDER UNIT TO BE 1/360 OF SPAN, NOT TO EXCEED 1/2 INCH.
4. ALTERNATELY THE UNIT MAY BE SUPPORTED ON COLUMNS AT SIX (6) LOCATIONS. CONSULT YOUR BAC REPRESENTATIVE FOR DETAILS.
5. IF VIBRATION ISOLATION RAILS ARE USED BETWEEN UNIT AND SUPPORTING STEEL, BE CERTAIN TO ALLOW FOR THE LENGTH OF THE VIBRATION RAILS WHEN DETERMINING LENGTH OF SUPPORTING STEEL. VIBRATION RAIL LENGTH AND MOUNTING HOLE LOCATIONS MAY DIFFER FROM THOSE OF THE UNIT. REFER TO VIBRATION ISOLATOR DRAWINGS FOR THIS DATA.
6. DO NOT USE THIS DRAWING TO SIZE POINT VIBRATION ISOLATORS. SEE YOUR BAC REPRESENTATIVE FOR DETAILS.



B.A.C. ORDER NO:
DATE:



SERIES 1500, FLUID COOLER
STANDARD STEEL SUPPORT
DRAWING NUMBER:
BAC-17154A