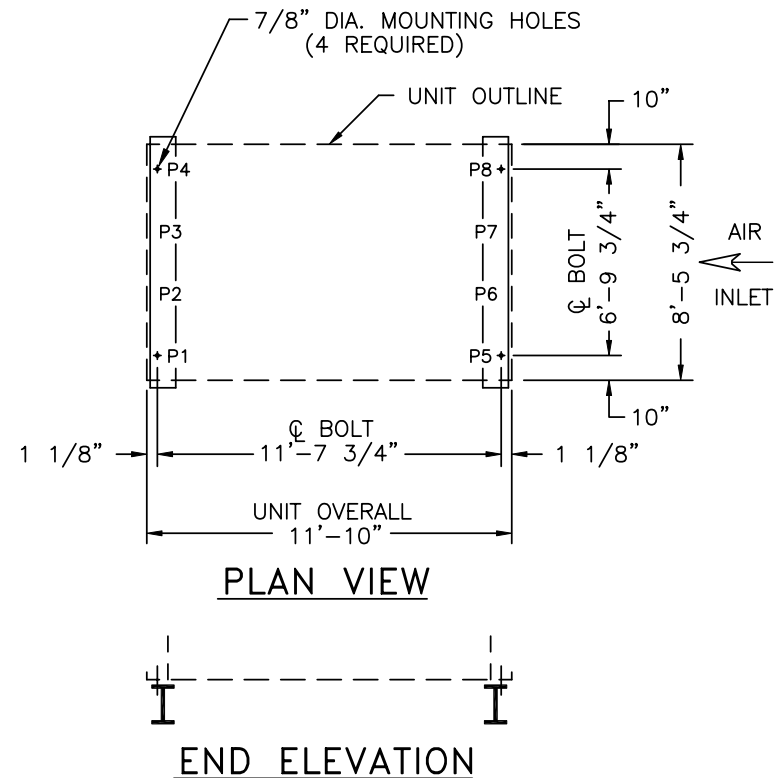


MODEL NUMBER	SHIPPING WEIGHT	FLOW RATE (USGPM)		WEIGHT LOADING (LBS.)																	
				@ NOMINAL FLOW								@ MAXIMUM FLOW									
		NOMINAL FLOW	MAXIMUM FLOW	OPER. WEIGHT	P1	P2	P3	P4	P5	P6	P7	P8	OPER. WEIGHT	P1	P2	P3	P4	P5	P6	P7	P8
15200	5350	600	958	9840	1170	1020	1020	1170	2435	295	295	2435	11430	1365	1160	1160	1365	2815	375	375	2815
15227	5410	681	1083	10100	1205	1045	1045	1205	2495	305	305	2495	11490	1370	1170	1170	1370	2830	375	375	2830
15250	5430	750	1190	10280	1225	1060	1060	1225	2540	315	315	2540	11510	1375	1170	1170	1375	2835	375	375	2835
15214	5640	642	1032	10440	1245	1080	1080	1245	2580	315	315	2580	12450	1480	1265	1265	1480	3065	415	415	3065
15245	5700	735	1177	10730	1280	1110	1110	1280	2650	325	325	2650	12510	1490	1270	1270	1490	3080	415	415	3080
15270	5720	810	1293	10940	1305	1130	1130	1305	2700	335	335	2700	12530	1490	1275	1275	1490	3085	415	415	3085
15282	5800	846	1349	11120	1325	1150	1150	1325	2745	340	340	2745	12610	1500	1285	1285	1500	3105	415	415	3105

**NOTES:**

1. SUPPORTING STEELWORK AND ANCHOR BOLTS TO BE DESIGNED AND FURNISHED BY OTHERS.
2. ALL SUPPORTING STEEL MUST BE LEVEL AT TOP.
3. BEAMS SHOULD BE SELECTED IN ACCORDANCE WITH ACCEPTED STRUCTURAL PRACTICE, MAXIMUM DEFLECTION OF BEAM UNDER UNIT TO BE 1/360 OF SPAN, NOT TO EXCEED 1/2 INCH.
4. ALTERNATELY THE TOWER MAY BE SUPPORTED ON COLUMNS AT THE FOUR CORNERS OF THE UNIT. CONSULT YOUR BAC REPRESENTATIVE FOR DETAILS.
5. IF VIBRATION ISOLATION RAILS ARE USED BETWEEN TOWER AND SUPPORTING STEEL, BE CERTAIN TO ALLOW FOR THE LENGTH OF THE VIBRATION RAILS WHEN DETERMINING LENGTH OF SUPPORTING STEEL. VIBRATION RAIL LENGTH AND MOUNTING HOLE LOCATIONS MAY DIFFER FROM THOSE OF THE COOLING TOWER. REFER TO VIBRATION ISOLATOR DRAWINGS FOR THIS DATA.
6. OPERATING WEIGHT AND WEIGHT LOADING ARE FOR TOWER WITH WATER LEVEL IN PAN AT OVERFLOW.
7. FOR ACTUAL OPERATING WEIGHT INTERPOLATE BETWEEN FLOW RATES GIVEN.



B.A.C.  
ORDER NO:

---

DATE: / /



BALTIMORE AIRCOIL  
COMPANY

SERIES 1500  
STANDARD STEEL SUPPORT

DRAWING NUMBER:  
BAC-16508A

A