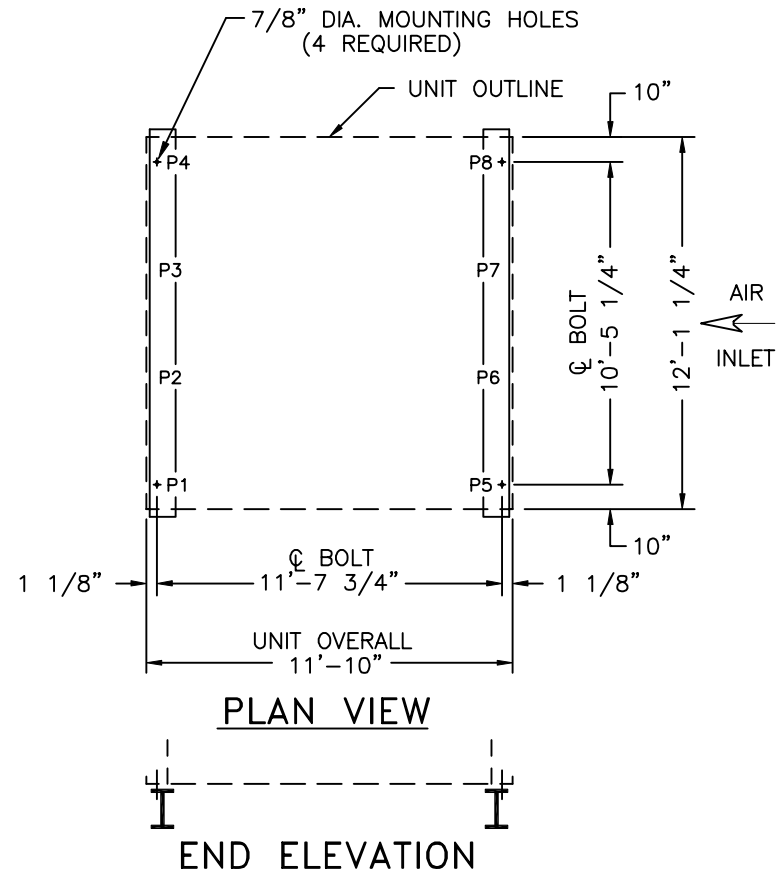


MODEL NUMBER	SHIPPING WEIGHT	FLOW RATE (USGPM)		WEIGHT LOADING (LBS.)																	
				@ NOMINAL FLOW								@ MAXIMUM FLOW									
		NOMINAL FLOW	MAXIMUM FLOW	OPER. WEIGHT	P1	P2	P3	P4	P5	P6	P7	P8	OPER. WEIGHT	P1	P2	P3	P4	P5	P6	P7	P8
15296	6750	888	1421	12920	1530	1320	1320	1530	3195	415	415	3195	15540	1845	1555	1555	1845	3825	545	545	3825
15325	6800	975	1557	13160	1560	1340	1340	1560	3255	425	425	3255	15590	1855	1560	1560	1855	3835	545	545	3835
15350	6850	1050	1674	13380	1590	1365	1365	1590	3305	430	430	3305	15640	1855	1570	1570	1855	3850	545	545	3850
15368	6870	1104	1757	13550	1610	1380	1380	1610	3345	440	440	3345	15660	1860	1570	1570	1860	3855	545	545	3855
15310	7070	930	1500	13640	1620	1395	1395	1620	3370	435	435	3370	17050	2025	1705	1705	2025	4190	605	605	4190
15340	7120	1020	1642	13920	1650	1425	1425	1650	3440	445	445	3440	17100	2035	1710	1710	2035	4200	605	605	4200
15365	7170	1095	1759	14170	1685	1445	1445	1685	3500	455	455	3500	17150	2040	1715	1715	2040	4215	605	605	4215
15385	7200	1155	1852	14360	1705	1465	1465	1705	3545	465	465	3545	17180	2045	1720	1720	2045	4220	605	605	4220
15425	7470	1275	2041	14900	1775	1525	1525	1775	3675	475	475	3675	17450	2075	1755	1755	2075	4290	605	605	4290

NOTES:

1. SUPPORTING STEELWORK AND ANCHOR BOLTS TO BE DESIGNED AND FURNISHED BY OTHERS.
2. ALL SUPPORTING STEEL MUST BE LEVEL AT TOP.
3. BEAMS SHOULD BE SELECTED IN ACCORDANCE WITH ACCEPTED STRUCTURAL PRACTICE, MAXIMUM DEFLECTION OF BEAM UNDER UNIT TO BE 1/360 OF SPAN, NOT TO EXCEED 1/2 INCH.
4. ALTERNATELY THE TOWER MAY BE SUPPORTED ON COLUMNS AT THE FOUR CORNERS OF THE UNIT. CONSULT YOUR BAC REPRESENTATIVE FOR DETAILS.
5. IF VIBRATION ISOLATION RAILS ARE USED BETWEEN TOWER AND SUPPORTING STEEL, BE CERTAIN TO ALLOW FOR THE LENGTH OF THE VIBRATION RAILS WHEN DETERMINING LENGTH OF SUPPORTING STEEL. VIBRATION RAIL LENGTH AND MOUNTING HOLE LOCATIONS MAY DIFFER FROM THOSE OF THE COOLING TOWER. REFER TO VIBRATION ISOLATOR DRAWINGS FOR THIS DATA.
6. OPERATING WEIGHT AND WEIGHT LOADING ARE FOR TOWER WITH WATER LEVEL IN PAN AT OVERFLOW.
7. FOR ACTUAL OPERATING WEIGHT INTERPOLATE BETWEEN FLOW RATES GIVEN.



B.A.C. ORDER NO: _____

DATE: _____



BALTIMORE AIRCOIL COMPANY

SERIES 1500 STANDARD STEEL SUPPORT

DRAWING NUMBER: BAC-16511A