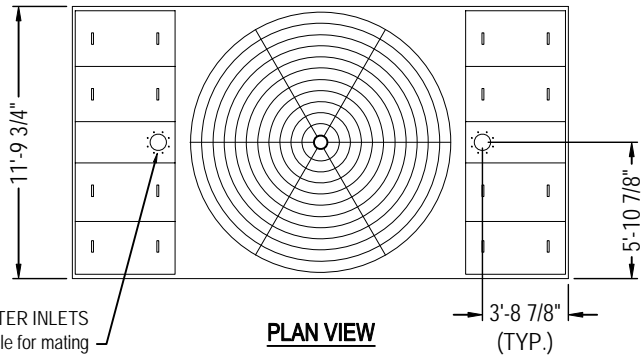
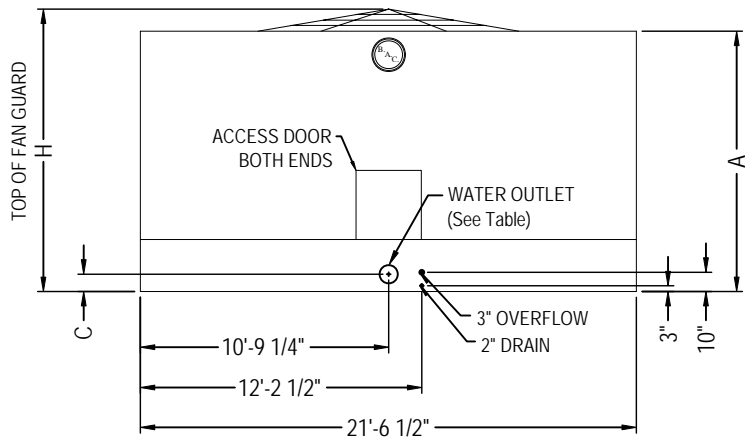


2007© Baltimore Aircoil Company. All Rights Reserved.

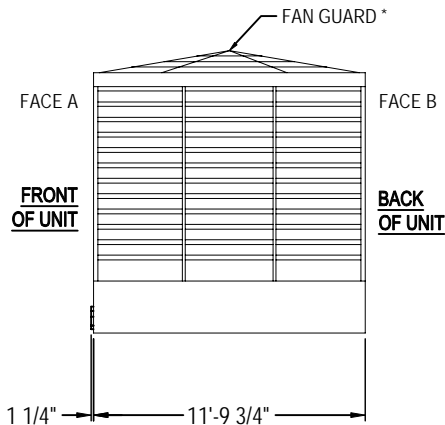


TOP WATER INLETS
Stud circle for mating
with an ASME class
150 flat face flange
(See Table)

PLAN VIEW



END ELEVATION (FACE A)



SIDE ELEVATION

Model Number	Shipping Weight	Operating Weight	"A" Dimension	"H"	
				Standard Fan	Low Sound Fan
3473C	10900	22730	9'-11 3/4"	10'-10 1/8"	11'-8 5/8"
3501C	10950	22780	9'-11 3/4"	10'-10 1/8"	11'-8 5/8"
3552C	11510	25150	11'-3 3/4"	12'-2 1/8"	13'-0 5/8"
3604C	11670	25310	11'-3 3/4"	12'-2 1/8"	13'-0 5/8"
3648C	11680	25320	11'-3 3/4"	12'-2 1/8"	13'-0 5/8"
3672C	12440	26080	11'-3 3/4"	12'-8 1/8"	13'-0 5/8"

Water Inlet and Outlet Sizing			
Flow Range	Top Inlet Size	End Outlet Size	"C" Dimension
349 - 2300	(2) 8"	10"	9 1/8"
2301 - 3200	(2) 8"	12"	9 1/8"

NOTES:

1. Unless otherwise indicated, connections 3" and smaller are MPT. Connections 4" and larger are grooved to suit a mechanical coupling and beveled for welding.
2. All dimensions are in feet and inches. Weights are in pounds and represent the standard unit configuration. Some accessories require weight adds that are shown on the respective accessory drawings.
3. For weight loadings and support requirements, refer to the suggested steel support drawing.
4. The area above the fan discharge must be unobstructed.
5. Piping must not be supported by the tower inlet or outlet connections.
6. Refer to top water inlet drawing for details of top water inlets and supports.
7. Refer to make-up valve drawing for location and size of make-up valve connections.
8. Top of Fan Guard dimension may include cowl extension which may not be shown.
9. Some accessories require height adds that are shown on the respective accessory drawings.

* Due to height limitations on truck shipments, the fan guard may ship unmounted.

ORDER NO:

DATE:



Series 3000 Unit Print
Top Inlet / End Outlet / Pump Suction

DRAWING NUMBER:
BAC-CA0AC0B100