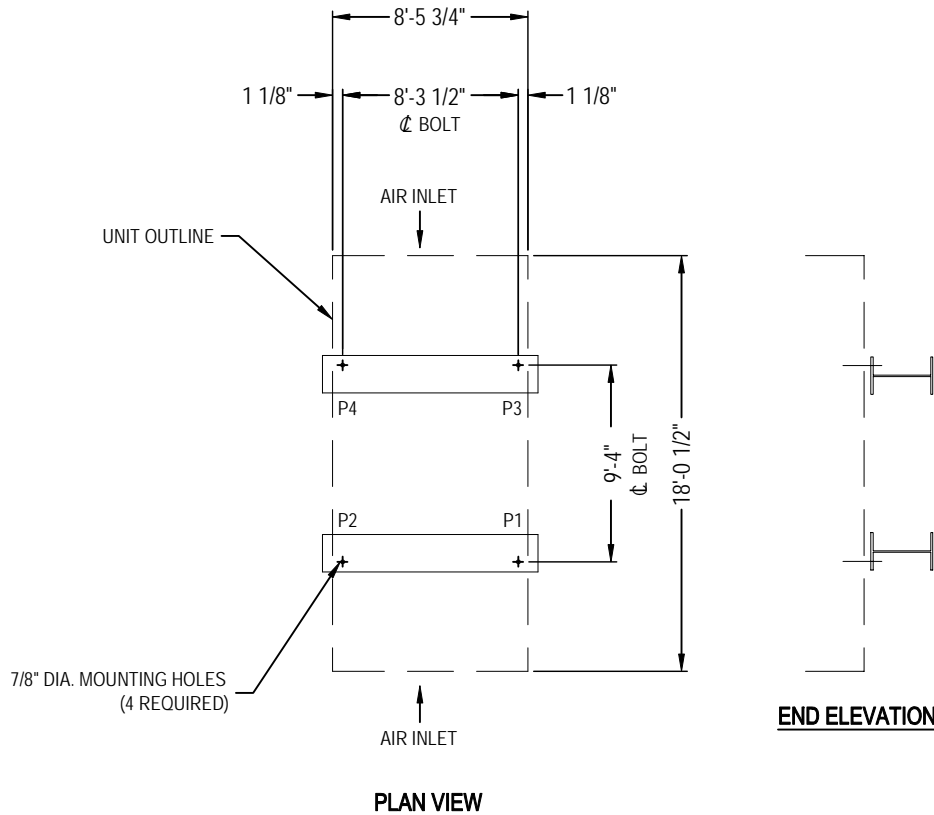


NOTES:

1. Operating weight and weight loading are for towers with water level in basin at overflow.
2. Unit support beams and anchor bolts to be designed and furnished by others.
3. All supporting steel must be flush and level at top. Beam support girders, if any, must be below the unit support beams.
4. Beams should be selected in accordance with accepted structural practice. Maximum deflection of beam under unit to be 1/360 of span, not to exceed 1/2 inch.
5. Weights shown are for standard unit. Some accessories may require weight adds. See respective accessory submittal drawing for weight adds.
6. If vibration rails are used between tower and supporting beam, be certain to allow for the length of the vibration rails when determining length of supporting steel. Vibration rail length and mounting hole location may differ from those of the cooling tower. Refer to vibration isolation drawings for this data.
7. For non-standard steel spacing, mounting holes in flange are to be drilled by others.



*ANCHORAGE DESIGNED IN ACCORDANCE WITH THE 2006 INTERNATIONAL BUILDING CODE (IBC). SEE MECHANICAL SPECIFICATION FOR SPECIFIC DESIGN LOADS.

Model Number	Shipping Weight	Operating Weight	Load Points			
			P1	P2	P3	P4
3240C	7610	15200	3800	3800	3800	3800
3272C	7730	15320	3830	3830	3830	3830
3299C	7790	15380	3845	3845	3845	3845
3333C	8060	16190	4048	4048	4048	4048
3358C	8090	16220	4055	4055	4055	4055
3379C	8140	16270	4068	4068	4068	4068

ORDER NO:

DATE:



SERIES 3000
 STEEL SUPPORT - PLAN A
 DRAWING NUMBER:
 BAC-CB0AA00100