

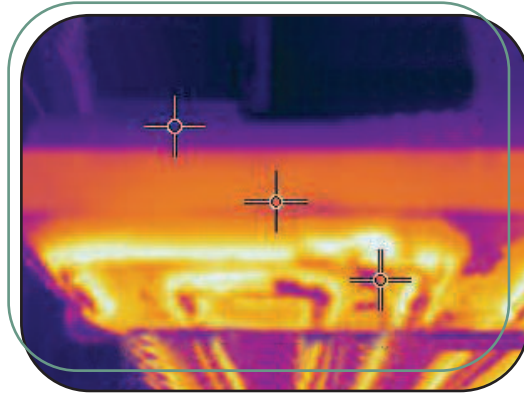


BAC Aircoil™ Evaporator Pan Features

Product Report



Enhanced Pan Layout



Thermography Testing of Aluminum Extrusions

BAC has created an industry-leading pan design, taking into account the feedback from our most important resource.....our customers. By replacing flanges with welds, moving all the piping within the pan profile, and giving extra space for insulation and piping, BAC has created a contractor friendly design, which offers the best value in the industrial refrigeration marketplace.

In addition, we have used an innovative new design to get the right amount of heat to the pan during hot-gas defrost. BAC uses stainless steel tubes that are expanded into an aluminum extrusion to enhance the tube-to-pan contact area exponentially. Combined with our standard aluminum pan...you get a great heat transfer surface, eliminating the possibility of random ice formation.

New Features Include:

- Removal of all flanges from piping
- Full coverage of unit piping
- 90° welded and serviceable check valve
- Additional spacing for insulation and piping
- Stainless steel pan defrost circuit
- Aluminum heat transfer extrusions
- Optimized pan circuiting
- A smooth welded aluminum pan surface