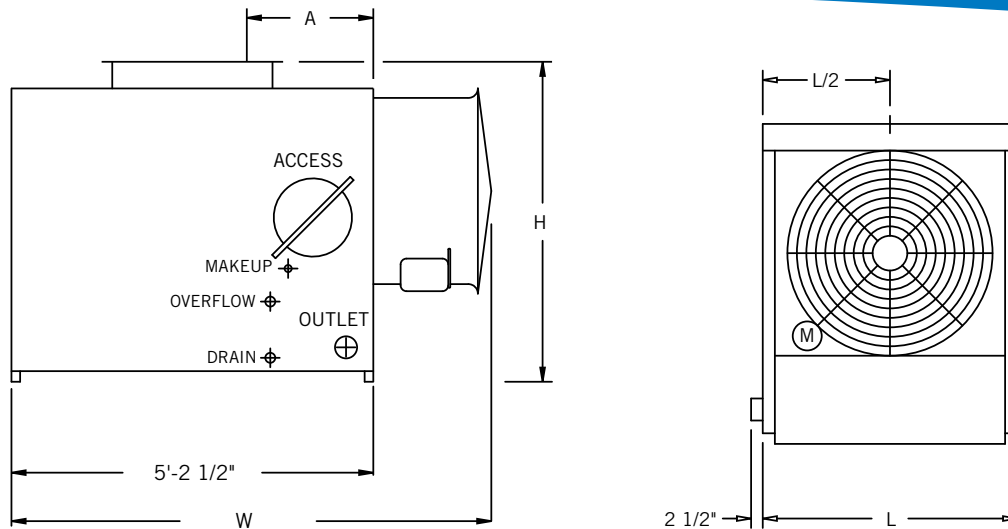


# FXT Engineering Data



Models FXT-58 and 68

Model Number	Nominal Tonnage	Motor HP	Airflow (CFM)	Dimensions				Weights (lbs)		Connection Sizes	
				L	W	H	A	Operating	Shipping	Inlet	Outlet
FXT-58	58	3	18,500	6'-1"	7'-4"	7'-4"	1'-5"	3,140	1,220	6"	6"
FXT-68	68	5	21,700	6'-1"	7'-4"	7'-4"	1'-5"	3,150	1,230	6"	6"
FXT-74	74	3	21,800	6'-1"	7'-4"	8'-4"	4'-2"	4,230	1,720	8"	8"
FXT-87	87	5	25,600	6'-1"	7'-4"	8'-4"	4'-2"	4,240	1,730	8"	8"
FXT-95	95	7.5	29,100	6'-1"	7'-8"	8'-4"	4'-2"	4,280	1,770	8"	8"
FXT-115	115	5	33,900	9'-2"	7'-4"	8'-4"	4'-2"	6,080	2,220	8"	8"
FXT-130	130	7.5	38,300	9'-2"	7'-4"	8'-4"	4'-2"	6,120	2,260	8"	8"
FXT-136	136	10	41,800	9'-2"	7'-8"	8'-4"	4'-2"	6,160	2,300	8"	8"
FXT-160	160	7.5	47,100	12'-1"	7'-4"	8'-4"	4'-2"	8,030	2,880	8"	8"
FXT-175	175	10	51,500	12'-1"	7'-4"	8'-4"	4'-2"	8,070	2,920	8"	8"
FXT-192	192	15	58,900	12'-1"	7'-8"	8'-4"	4'-2"	8,120	2,970	8"	8"
FXT-216	216	10	56,400	12'-1"	7'-4"	11'-0"	3'-8"	9,420	3,560	8"	8"
FXT-240	240	15	65,300	12'-1"	7'-8"	11'-0"	3'-8"	9,470	3,610	8"	8"
FXT-257	257	20	70,000	12'-1"	7'-8"	11'-0"	3'-8"	9,490	3,630	8"	8"



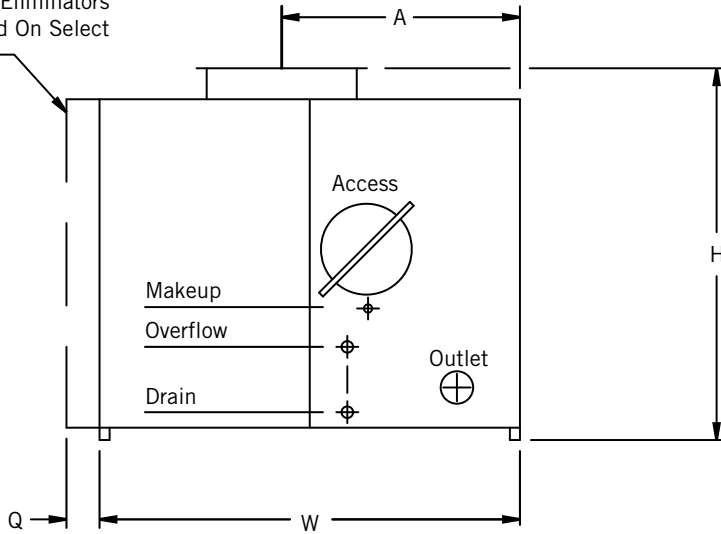
## NOTES:

1. Unless otherwise indicated, all connections 4" and smaller are MPT and connections 6" and larger are beveled for welding.
2. Operating weight is based on the water level in cold water basin at overflow height.
3. Nominal tons of cooling represents the capability to cool 3 USGPM of water from a 95°F entering water temperature to an 85°F leaving water temperature at a 78°F entering wet-bulb temperature.

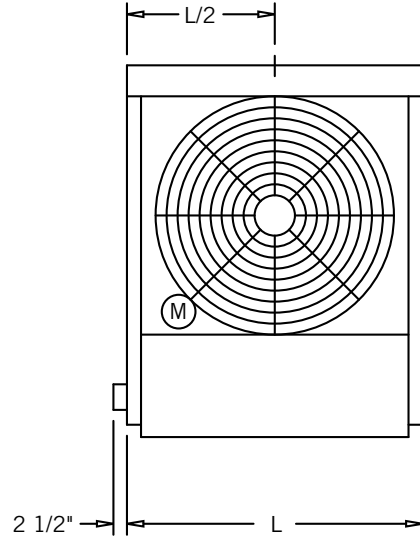
**Do not use for construction.** Refer to factory certified dimensions. This catalog includes data current at the time of publication, which should be reconfirmed at the time of purchase.

# FXT Engineering Data

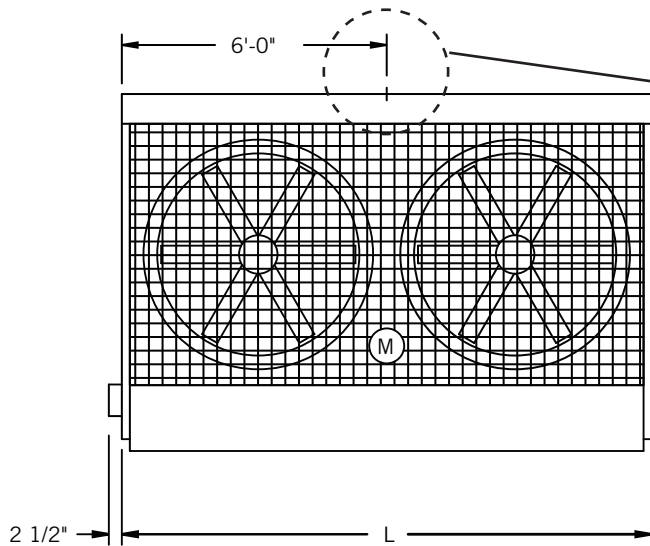
\*Double Eliminators  
Standard On Select  
Models



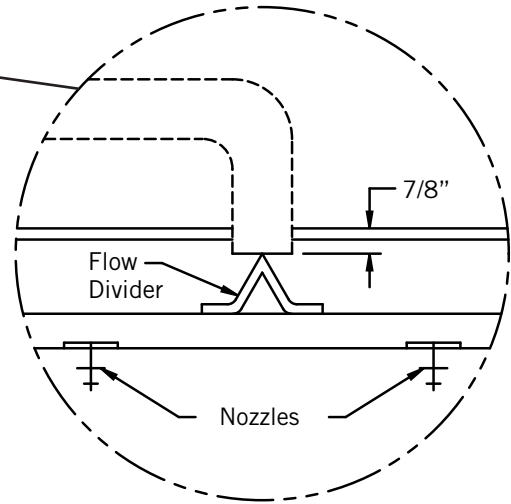
Models FXT 74-257



Models FXT 74-136



Models FXT 160-257

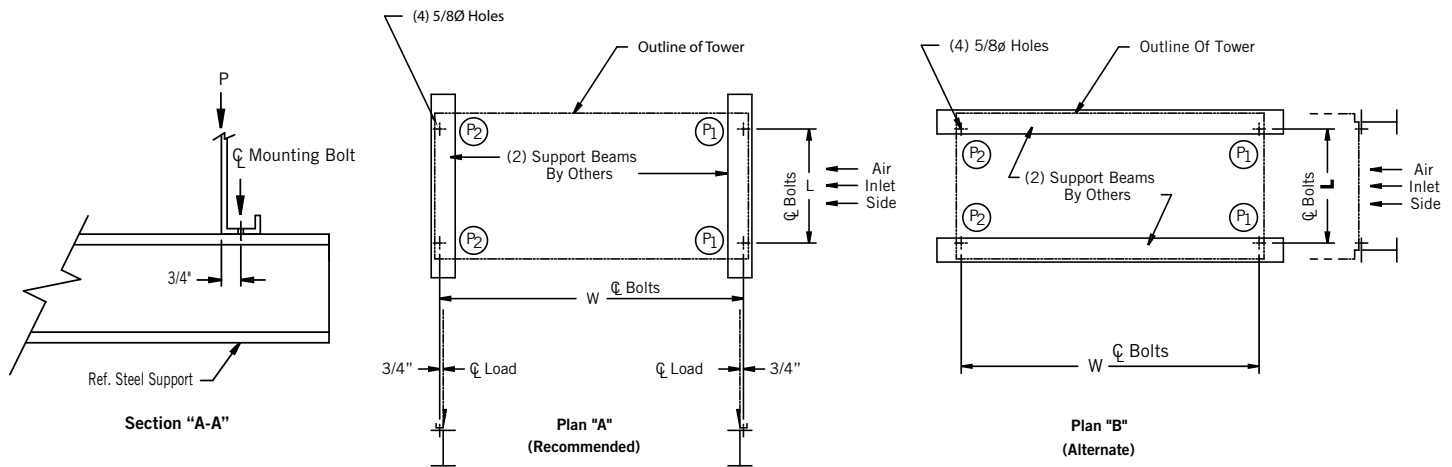


Flow Divider

# FXT Structural Support



The recommended support arrangement for the FXT Cooling Tower consists of parallel “I” beams positioned as shown in the drawings. Besides providing adequate support, the steel also serves to raise the unit above any solid foundation to assure access to the bottom of the tower. FXT towers may also be supported on columns at the anchor bolt locations shown, if required. A minimum bearing surface of 6” x 6” inches square must be provided under each of the concentrated load points.



## STANDARD UNIT – STEEL SUPPORT

Model Number	Weight (lbs)		L	W	P1	P2
	Shipping	Operating				
FXT-58	1,220	3,140	5'	5'-1"	989	581
FXT-68	1,230	2,150	5'	5'-1"	992	583
FXT-74	1,720	4,230	5'	7'-1 7/8"	1,163	952
FXT-87	1,730	4,240	5'	7'-1 7/8"	1,166	954
FXT-95	1,770	4,280	5'	7'-1 7/8"	1,178	962
FXT-115	2,220	6,080	8'	7'-1 7/8"	1,672	1,368
FXT-130	2,260	6,120	8'	7'-1 7/8"	1,683	1,377
FXT-136	2,300	6,160	8'	7'-1 7/8"	1,695	1,385
FXT-160	2,880	8,030	11'	7'-1 7/8"	2,208	1,807
FXT-175	2,920	8,070	11'	7'-1 7/8"	2,219	1,816
FXT-192	2,970	8,120	11'	7'-1 7/8"	2,234	1,826
FXT-216	3,560	9,420	11'	7'-1 7/8"	2,543	2,167
FXT-240	3,610	9,470	11'	7'-1 7/8"	2,557	2,178
FXT-257	3,630	9,490	11'	7'-1 7/8"	2,563	2,182



### NOTES:

1. Support beams and anchor bolts are to be selected and installed by others.
2. Operating weight is based on the water level in cold water basin at overflow height.
3. All support steel must be level at the top.
4. If vibration isolation rails are to be used between the unit and supporting steel, be certain to allow for the length of the vibration rails when determining the length of the supporting steel, as vibration rail length and mounting hole locations may differ from those of the unit.
5. Beams must be selected in accordance with accepted structural practice. Maximum deflection of beam under unit to be 1/360 of span, not to exceed 1/2”.