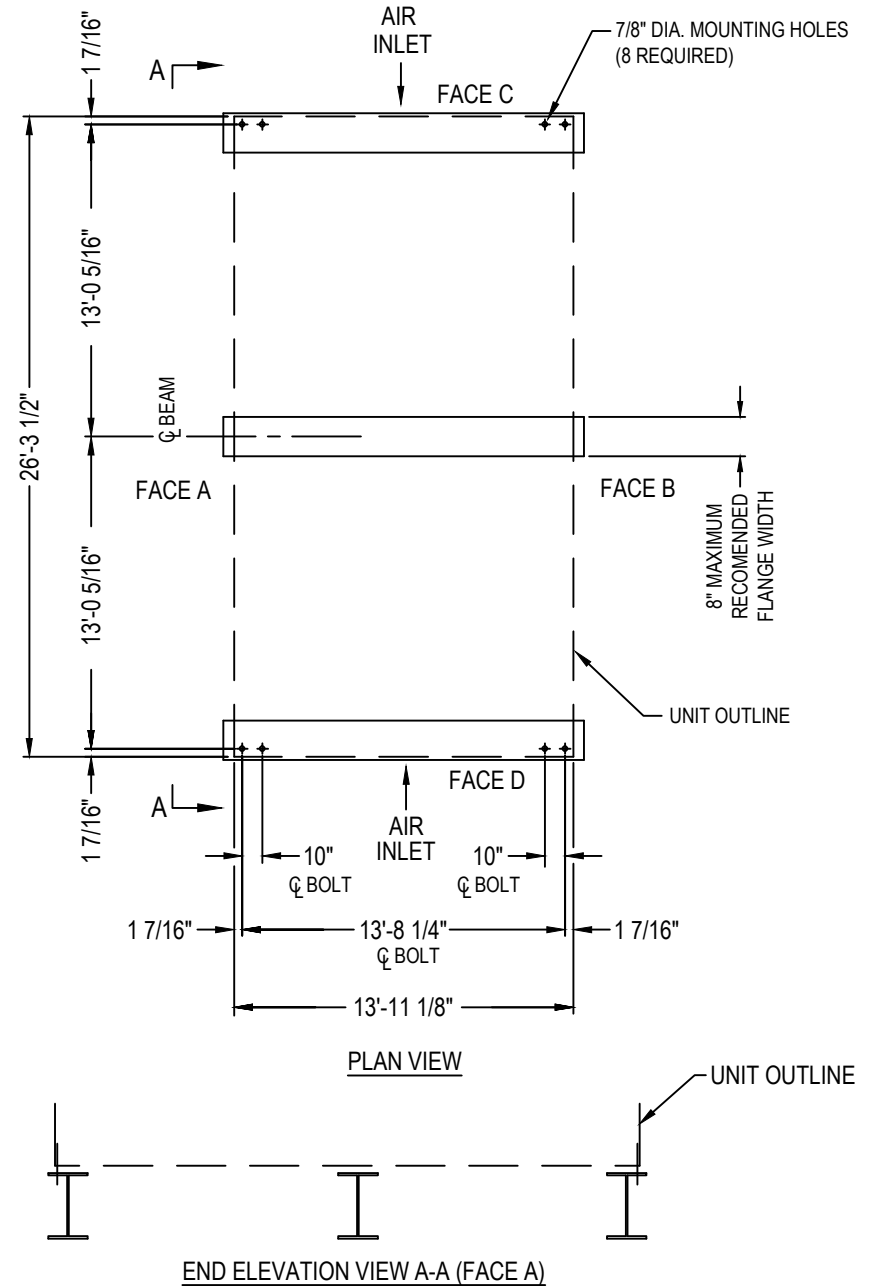


Model Number	Operating Weight	Shipping Weight
FXV3-1426-20D-xx	67700	37420
FXV3-1426-24D-xx	71060	39640
FXV3-1426-24T-xx	71085	39650
FXV3-1426-24Q-xx	71610	39890
FXV3-1426-28D-xx	75020	42530
FXV3-1426-30T-xx	78040	44520
FXV3-1426-32D-xx	78315	44710
FXV3-1426-32Q-xx	80065	45750
FXV3-1426-36D-xx	81615	46890
FXV3-1426-36T-xx	81795	47000
FXV3-1426-36Q-xx	81290	46560

NOTES:

1. Operating weight and weight loading are for units with water level in basin at overflow.
2. Supporting steelwork and anchor bolts to be designed and furnished by others.
3. All supporting steel must be level at top.
4. Beams should be selected in accordance with accepted structural practice. Minimum bearing width shall be 6". Maximum deflection of beam under unit to be 1/360 of span, not to exceed 1/2 inch.
5. Weights shown are for standard unit. Some accessories may add weight. See respective accessory submittal drawing for weight adds.



ORDER NO:

DATE:



Baltimore Aircoil

Series FXV
Steel Support - Plan A

DRAWING NUMBER:
FXV3-1426-xxx-xx-SS