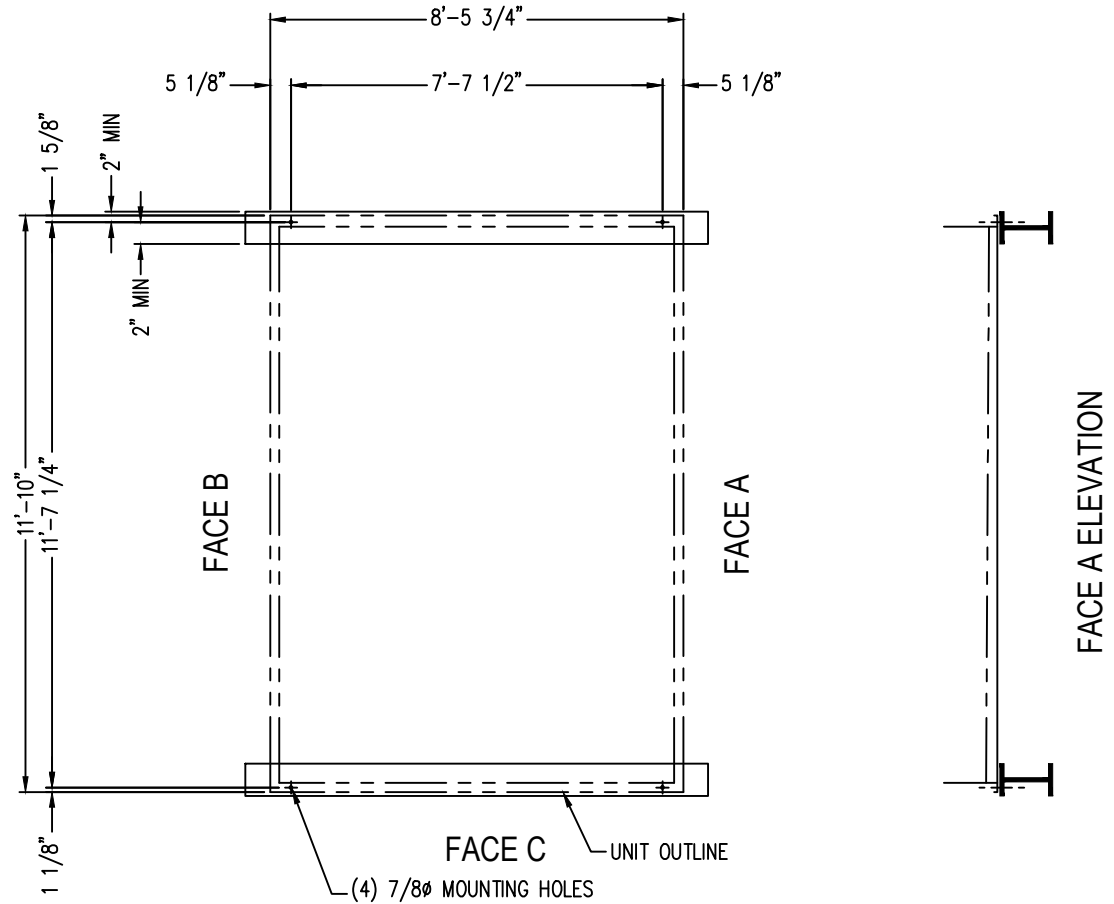


Notes

- 1) All dimensions are in feet and inches. Weights are in pounds. Values listed are for standard construction units with no additional options and accessories; exact values may vary depending upon unit configuration.
- 2) Operating weight and weight loading are for units with water level in basin at overflow.
- 3) Unit support beams and anchor bolts to be designed and furnished by others.
- 4) Support beams must be flush and level at top.
- 5) Each beam should be designed, as a minimum, for 65% of the total unit operation weight applied as a uniformly distributed load.

PLAN VIEW  
FACE D (AIR INLET)



Model Number	Operating Weight	Shipping Weight
XES15E-1285-09FN	11650	5660
XES15E-1285-09GN	11680	5690
XES15E-1285-09HN	11690	5700
XES15E-1285-09JN	11740	5750
S15E-1285-09KN	11760	5770
S15E-1285-09LN	11880	5890
S15E-1285-09MN	11940	5950
XES15E-1285-10FN	12400	5930
XES15E-1285-10GN	12430	5960
XES15E-1285-10HN	12440	5970
XES15E-1285-10JN	12490	6020
XES15E-1285-10KN	12510	6040
S15E-1285-10LN	12630	6160
S15E-1285-10MN	12690	6220
S15E-1285-10NN	12720	6250

ORDER NO:

DATE: **3/18/2014**



**BALTIMORE  
AIRCOIL COMPANY**

**Single Cell Unit Support  
1285-09-10 Plan "A" Steel**

DRAWING NUMBER:  
**SS-XE-S15E-1285-09-10**