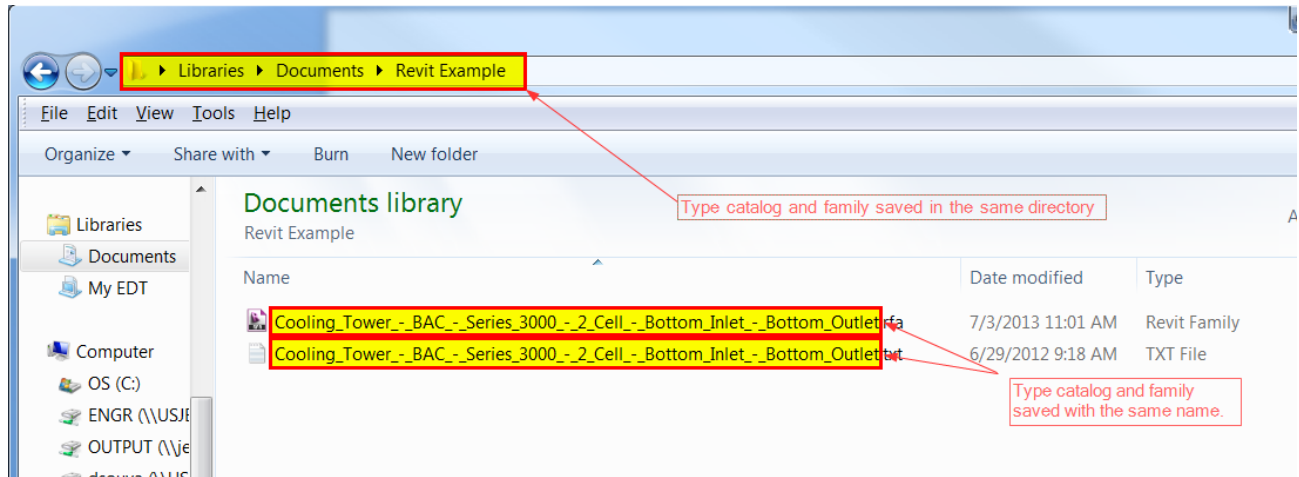


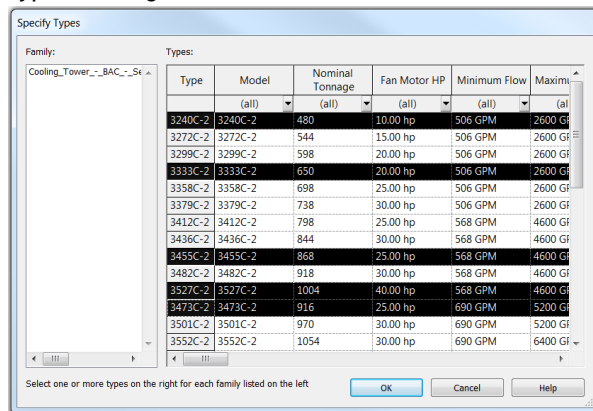
Instructions for Loading BAC Revit Content

1. Save Revit Family (.rfa) and type catalog (.txt) files in the same directory with the same name.



2. Open Revit and create a new project or open an existing project.
3. Navigate to Insert tab and click Load Family.
4. Navigate to the Revit family and open it. When the Type Catalog is displayed, select your model number(s). You can select more than one using the Ctrl or Shift keys. Click OK after selecting your model number(s).

Type Catalog

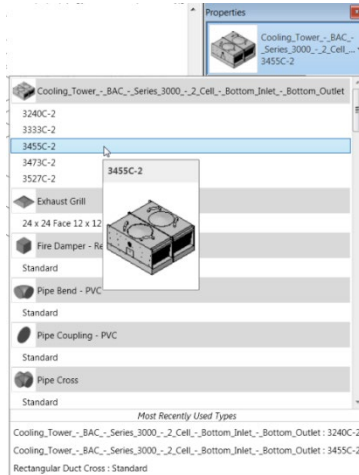


5. Navigate to the Architecture tab and click Component. By default, this will start the Place a Component command.

- Click on the product family that you just placed into the project. At the top of the Properties window, use the type selector to select the desired model, per the picture below.

Note: If the properties window is not displayed, navigate to the Modify tab and click the Properties to turn it on.

Type Selector



- Your selected model should now be placed in your project.

If you have any questions, please contact your local BAC Representative at www.baltimoreaircoil.com/contact-us.